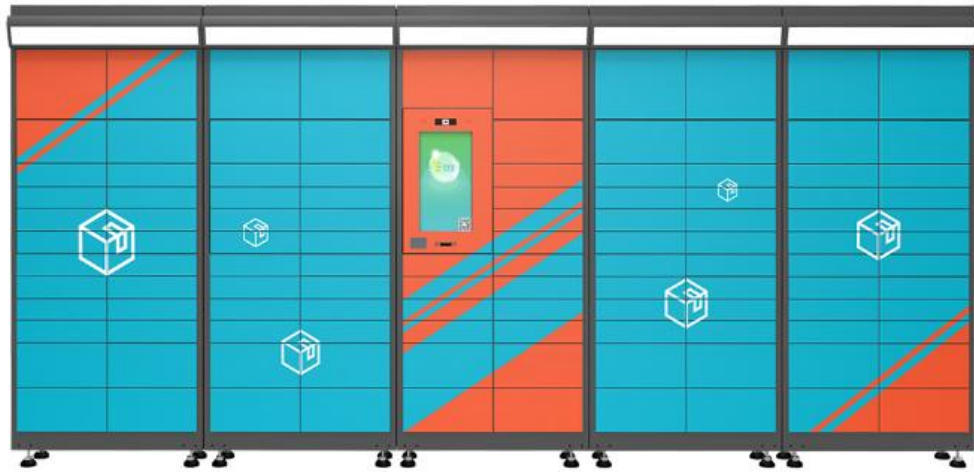


TDS1539H(1000nits)

Open-Frame touchscreen Monitor



Features

- + Zero bezel, open-frame structure
- + Front panel and touchscreen sealing
- + 1000 nits high brightness LCD
- + Resolution 1920X1080FHD@60Hz
- + 10-touch Projected Capacitive touchscreen
- + Anti-UV optical adhesive bonding
- + Anti-glare surface treatment on the cover
- + Onboard light sensor function(optional)
- + Brightness changes with ambient light
- + Temperature control cooling fan module
- + Video interface: HDMI+VGA
- + Reserve side and back assembly holes
- + Easy to remove OSD, easy to update
- + Support OS: Windows/Android/Linux
- + 2-year Warranty

Optional:

- No touchscreen
- Video interface: DP
- 700-1200nits
- No cooling fan
- All-In-One(Android/Windows)



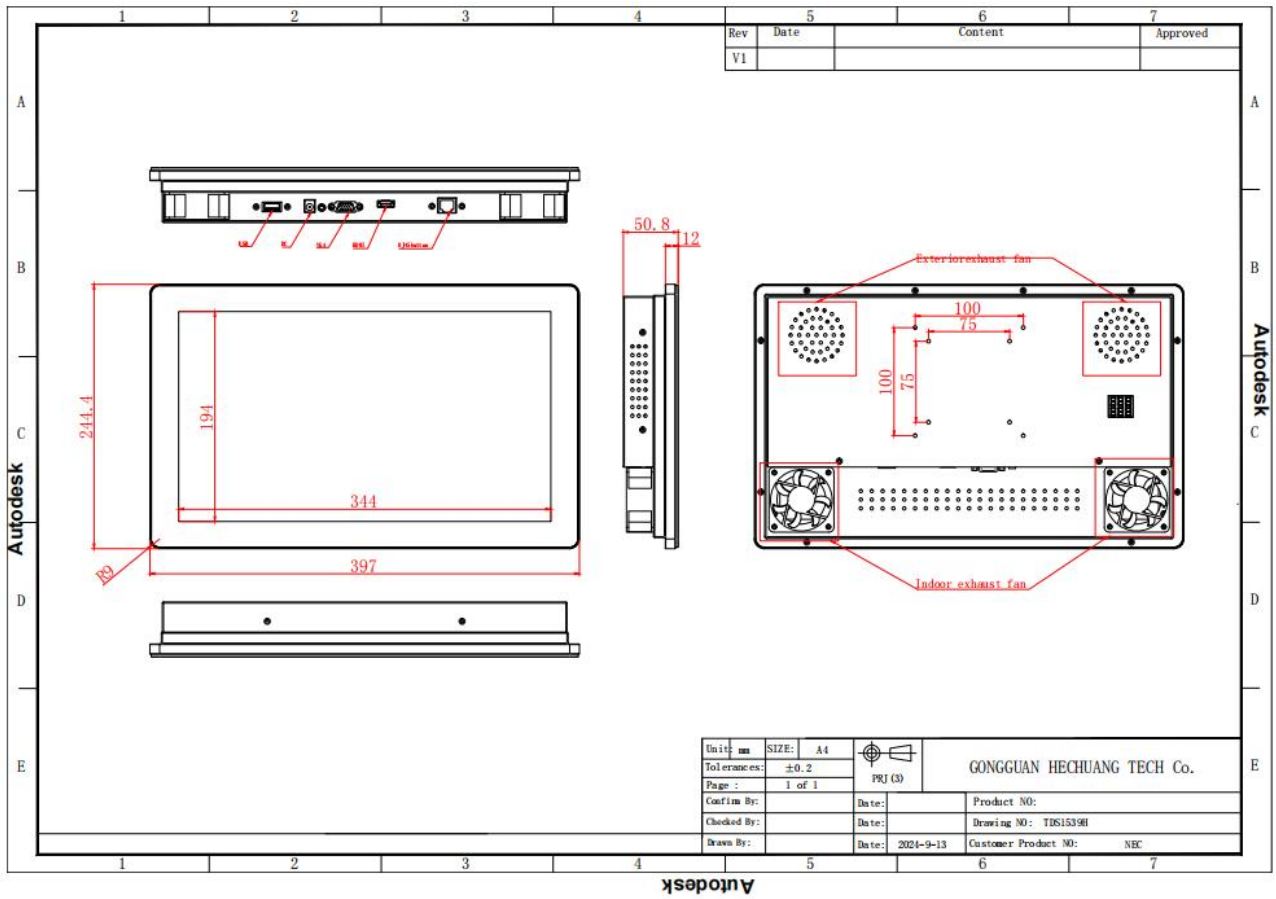
1539H High Brightness Open-Frame Monitor

Diagonal	15.6" (16:9)
Color	Metal silver
Active Area	344.16X193.59(mm)
Native Resolution	1920X1080 FHD@60Hz
Number of Colors	16.7M , 76% NTSC
Viewing Angle	80/80/80/65 (Typ.)(CR≥10)
Contrast Ratio	800:1
Brightness	LCD: 1000nits; Touchscreen: 900nits
Light sensor (Optional)	Automatically adjust the brightness of the screen according to the ambient light. *When the ambient light is weak, it will automatically reduce the brightness of the display to avoid excessive glare and save energy. *When the ambient light is strong, the display brightness will be automatically enhanced to make the content clearly visible.
Response	30ms (Typ.)
Number of Touches	PCAP - 10 Touch
Glass treatment	AG coating
Touch Accuracy	≤2mm
I/O Interface	1*USB(touchscreen),1*HDMI,1*VGA,1*DC,1*RJ45 OSD
Input Voltage	AC: 100-240 VAC,50/60 Hz; +12VDC +/- 5%
Power Supply	12V5A(Power Jack : 2.1mmx5.5mm)
Power Consumption (Typical)	ON (Typical - 100% Brightness): 29W SLEEP FROM PC (monitor + adapter): 1.5 W
Cooling method	Cooling fan set
Temperature control	The fan speed will be controlled based on the internal temperature to achieve cooling function; (accuracy: ≤2°C) *When the internal temperature reaches > 30°C, start the fans. *When the temperature drops <30°C,stop the fans.
Temperature	Operating: 0°C-50°C; Storage: -20°C-70°C
Humidity	Operating: 20%-70%; Storage: 10%-80%
Mounting Options	Back VESA holes : 75mm&100mm
MTBF	50,000 hours
Dimensions	244.4X397X50.8(mm)
Weight(net.)	3KG
Shipping Dimensions	Five units in one box:550X440X380(mm)
Warranty	2-year
Support OS	Windows/Linux\Android
Agency Approvals	FCC; CE; ROHS;
What's in the Box	1*USB cable, 1*HDMI cable, 1*Power adapter, 1*DC cable, 1*RJ45 OSD Remote

Notes:

- 1.Recommend customers to use light sensors to effectively save energy and extend backlight life
- 2.If conditions allow, please avoid installing the product in an area exposed to direct sunlight. Use cantilevers or point products away from sunlight to reduce environmental stress on the product and extend its life.
- 3.Please maintain good ventilation on the back of the monitor and do not block the heat dissipation holes and fan blades.

TDS1539H-1000nits



Dimensions are in millimeters

